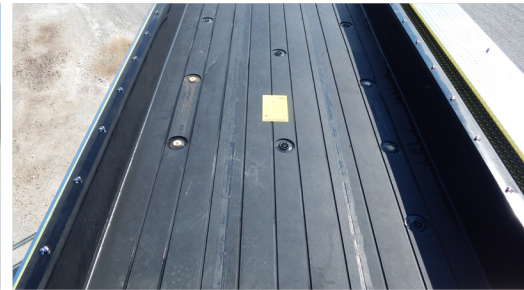


2000 GALLON TANKER #2529



TECHNICAL SPECIFICATIONS

- Freightliner M2 112 Crew Cab Chassis
- Cummins 450 HP L9 Engine
- Allison 3000 EVS Automatic Transmission
- Heavy Duty Stainless Steel Body and Subframe
- Stainless Steel Intermediate Pump Module
- Waterous CXVC20 1500 GPM Pump
- Trident Air Prime System
- FRC Pump Boss Pressure Governor
- FRC Tankvision Dual Water Tank Level Gauges with Three (3) Whelen Strip Lites
- Two (2) 6" Intakes, One (1) Each Side
- One (1) 2½" Gated Intake, Left Side
- Two (2) 2½" Discharges, Left Side, One (1) 2½" Discharge, Right Side
- One (1) 4" Discharge Adapted to 5" Stortz, Right Side
- One (1) 3" Discharge in Dunnage Area with Akron 3423 Deck Gun
- Two (2) 1½" and One (1) 2½" Mattydale Preconnects
- Two (2) Dual Wheel Well Air Bottle Compartment, One (1) Each Side
- Two (2) Wheel Well Fire Extinguisher Compartments, One (1) Each Side
- Beveled Lap/Box Style Doors
- Two (2) Compartments on Each Side
- Zico Hydraulic Folding Tank Bracket, Left Side
- Suction Hose Storage On Folding Tank Rack
- Extension and Roof Ladder Brackets on the Right Side
- 2000 Gallon Poly Wetside Tank with Wetside Hose Bed & Front Fill Tower
- Two (2) 4" Storz FirePrograms Tank Fills
- One (1) 10" Newton Stainless Steel Manual Swivel Dump, Rear
- 12 Volt Electrical System with NFPA Compliant Warning Light Package
- Progressive Dynamics Battery Charger with Viair Compressor, L1 Compartment
- Kusmaul 20 Amp Super Auto-Eject 120V Shoreline Connection
- Whelen LED Warning and LED Scene Light Package
- Whelen 200W Siren and 100W Speaker
- Akron Revel 12 Volt LED Brow Light
- Federal Q2B Surface Mounted Siren Left Side
- One (1) 10' Attic Ladder, One (1) 14' Roof Ladder with Hooks, One (1) 35' 3-Section Ladder, Two (2) 10' Lengths of 6" Suction Hose, and One (1) 2100 Gallon Folding Tank
- 10' 0" Overall Height
- 32' 2" Overall Length
- 261" Wheelbase
- 148.2" Cab to Axle
- 16,000 FAWR
- 31,000 RAWR
- 47,000 GVWR



