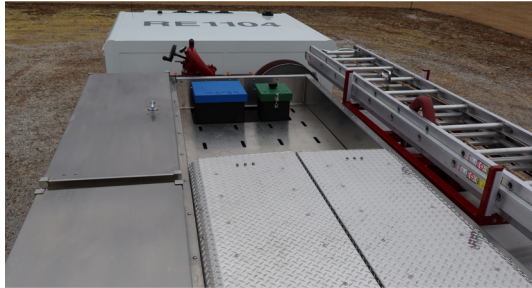


SIDE CONTROL 1500 GPM PUMPER #2575



TECHNICAL SPECIFICATIONS

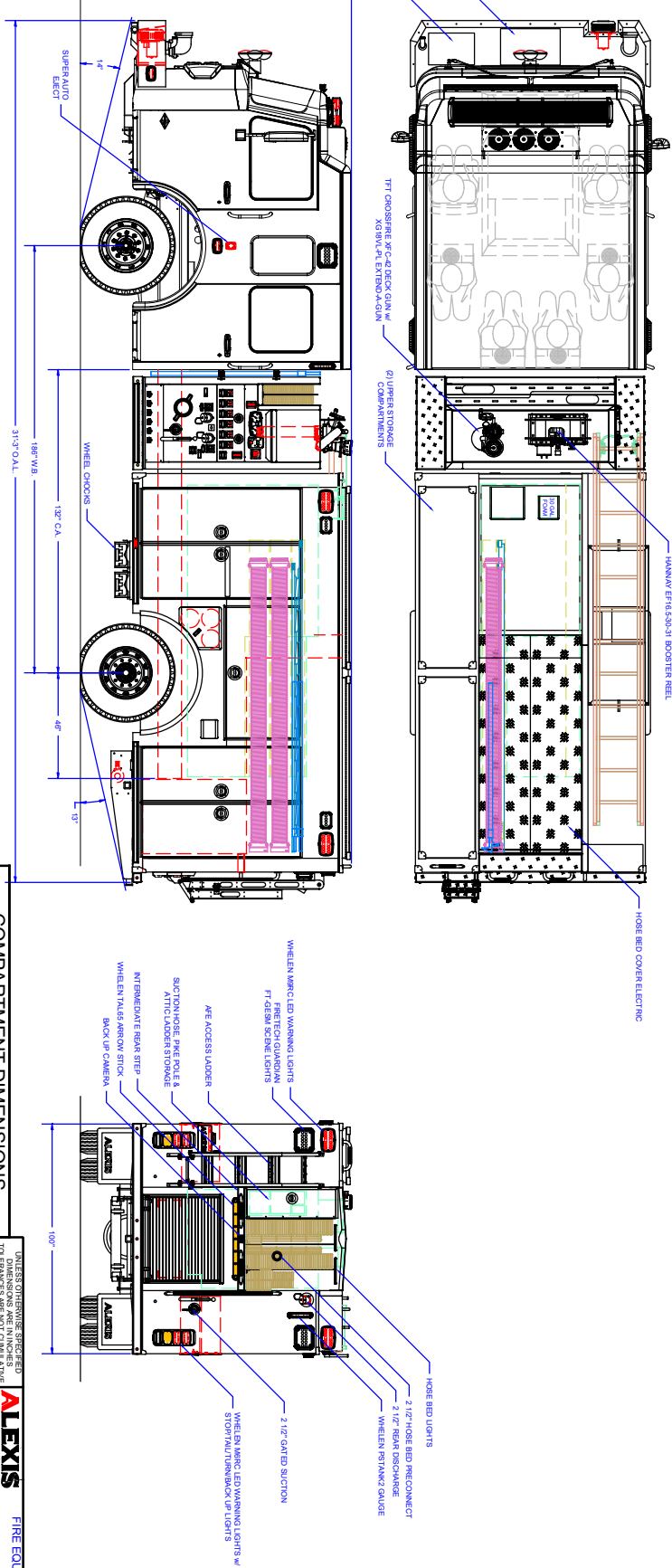
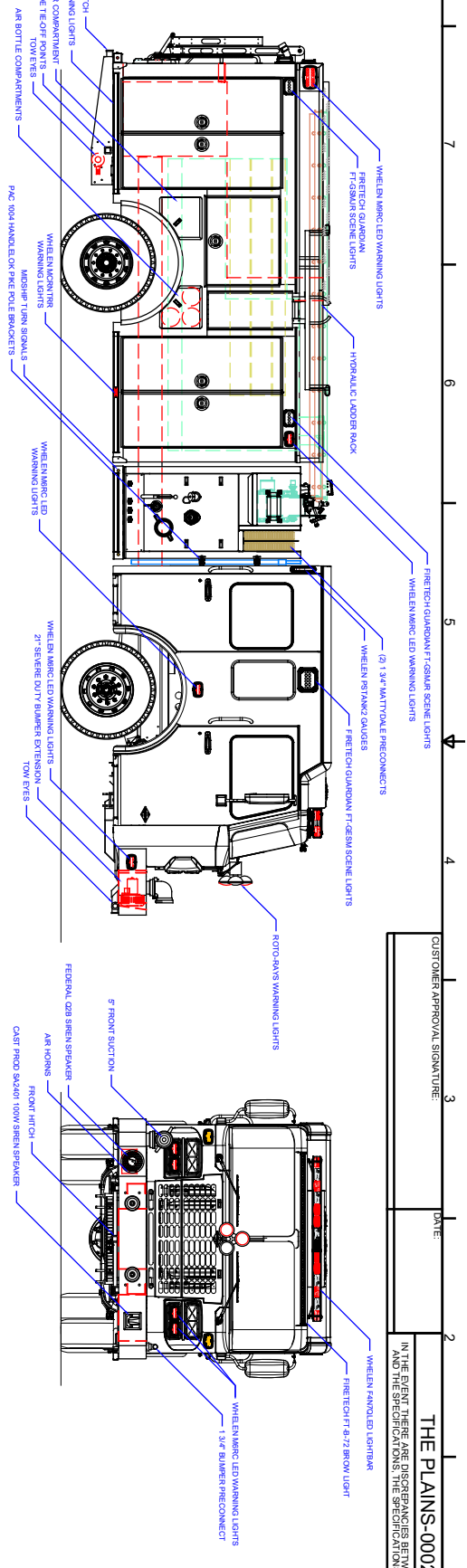
- Spartan Gladiator MFD Chassis with 10" Raised Roof
- Cummins X15 565 HP Diesel Engine
- Allison 4000 EVS Transmission
- Heavy Duty Stainless Steel Body with Stainless Steel Subframe
- Stainless Steel Side Control Pump Module with Stainless Steel Subframe
- Waterous CXVC20 1500 GPM Pump
- Trident Air Primer
- FRC Pump Boss Pressure Governor Monitoring System
- FRC TankVision Water Tank Level Gauge with Three (3) Whelen Strip Lites
- FRC TankVision Foam Tank Level Gauge
- Two (2) 6" Intakes, One (1) Each Side
- One (1) 5" Front Bumper Intake
- Three (3) 2½" Gated Intakes, One (1) Each Side and One (1) Rear
- Two (2) 2½" Discharge, Left Side and One (1) 2½" Discharge, Right Side
- One (1) 2½" Discharge, Rear Left Side
- One (1) 4" Discharge with 4" Storz Elbow, Right Side
- FoamPro 2001 Foam System with 30 Gallon Foam Tank and Power-Fill Foam Tank Refill System
- One (1) 3" Discharge Dunnage Area with TFT Crossfire Deck Gun and Extenda-Gun
- One (1) 2½" Preconnect Front of Hose Bed on the Right Side
- Two (2) 1½" Mattydale Preconnects
- One (1) ½" Bumper Extension Preconnect
- One (1) Booster Reel with 100' of 1" Hose, Pump Module Dunnage Right Side
- Two (2) Triple Air Bottle Wheel Well Compartments
- One (1) Fire Extinguisher Wheel Well Compartment
- Beveled Lap Style Doors
- Hydraulic Single Arm Ladder Rack. Right Side
- Suction Hose Storage in Hose Bed
- Two (2) Upper Storage Compartment, One (1) Each Side
- AFE Stainless Steel Rear Access Ladder with Flip Down Step
- 750 Gallon Poly Tank
- 12 Volt Electrical System with NFPA Compliant Warning Light Package
- Kussmaul Chief 4012 Battery Charger with Kussmaul 120 Volt Air Pump
- Kussmaul 20 Amp Super Auto-Eject 120V Shoreline Connection, Left Side of Cab
- Whelen LED Warning Light Package with Rear Arrow Stick
- Whelen 200W Siren and CPI 100W Speaker
- Eight (8) Firetech Guardian LED Scene Lights, Three (3) Each Side and Two (2) Rear
- One (1) Firetech HiViz LED Brow Scene Light Bar
- One (1) Vanner 3000 Watt Inverter with Change Over Relay and Two (2) Power Strips
- One (1) 10' Attic Ladder, One (1) 14' Roof Ladder with Hooks, One (1) 24' 2-Section Ladder, and Two (2) 10' Lengths of 6" Suction Hose
- 9'-10" Overall Height
- 31'-3" Overall Length
- 186" Wheelbase
- 132" Cab to Axle
- 22,800 FAWR
- 31,000 RAWR
- 53,800 GVWR



CUSTOMER APPROVAL SIGNATURE: _____ DATE: _____

THE PLANS-0002

IN THE EVENT THERE ARE DISCREPANCIES BETWEEN THE DRAWING AND THE SPECIFICATIONS THE SPECIFICATIONS SHALL PREVAIL.



COMPARTMENT DIMENSIONS

COMP #	DOOR OPENING SIZES
L1 & R1	46\"/>

REVISION HISTORY		Pump Info:			
NO	DESCRIPTION	DATE	BY	Control Location	Site
01	CHANGE ORDER 1	02/24/20	WLT	Pump Drive	Spill Shift
02	CHANGE ORDER 2	02/23/20	WLT	Chassis	Starlin 54 - BOC
03	CHANGE ORDER 3	02/23/20	WLT	Tank Capacity	750
04	CHANGE ORDER 4	02/23/20	WLT	Pump Model	CXV/C20
05	CHANGE ORDER 5	02/23/20	WLT	Pump GPM	1500

MATERIALS	
Material	Stainless Steel

ALEXIS FIRE EQUIPMENT CO.
 P.O. BOX 449, ALEXIS, LINDSEY, VA 24172

THE PLANS VOLUNTEER FIRE CO.
 THE PLANS, VA

SIZE SCALE: DRAWING: P-AA21
 CONTRACT # 2575 SHEET 1 OF 2

UNLESS OTHERWISE SPECIFIED, DIMENSIONS ARE IN MILLIMETERS (IN PARENTHESES). DIMENSIONS ARE NOT TO SCALE. ALL DIMENSIONS ARE TO THE CENTERLINE UNLESS NOTED OTHERWISE.