

## 3000 GALLON TANKER #2556



### TECHNICAL SPECIFICATIONS

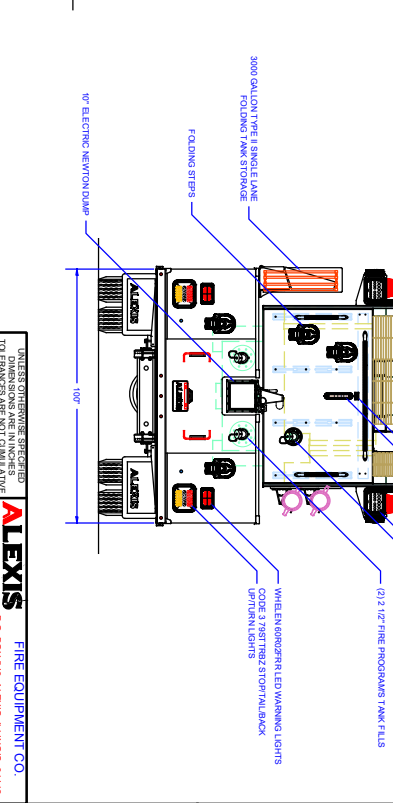
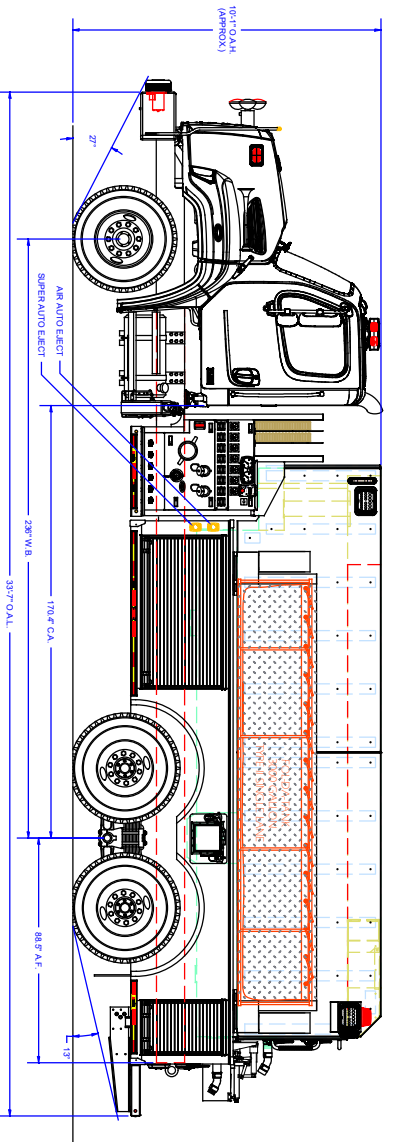
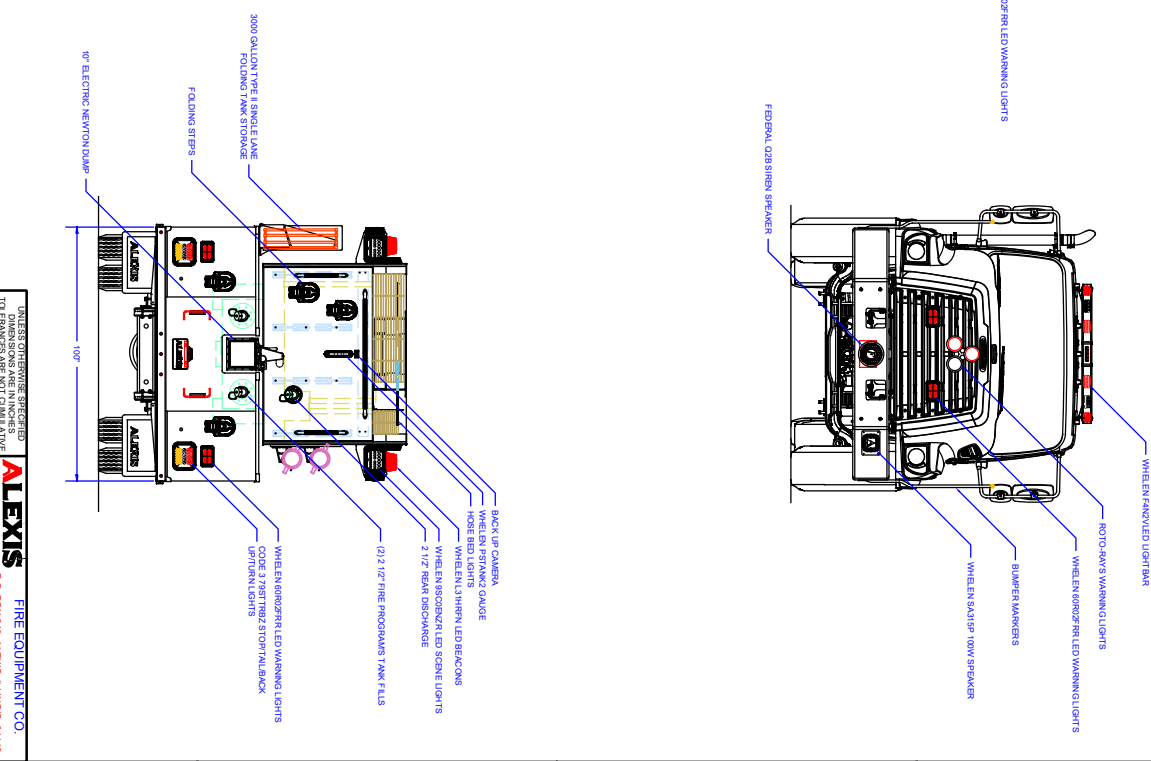
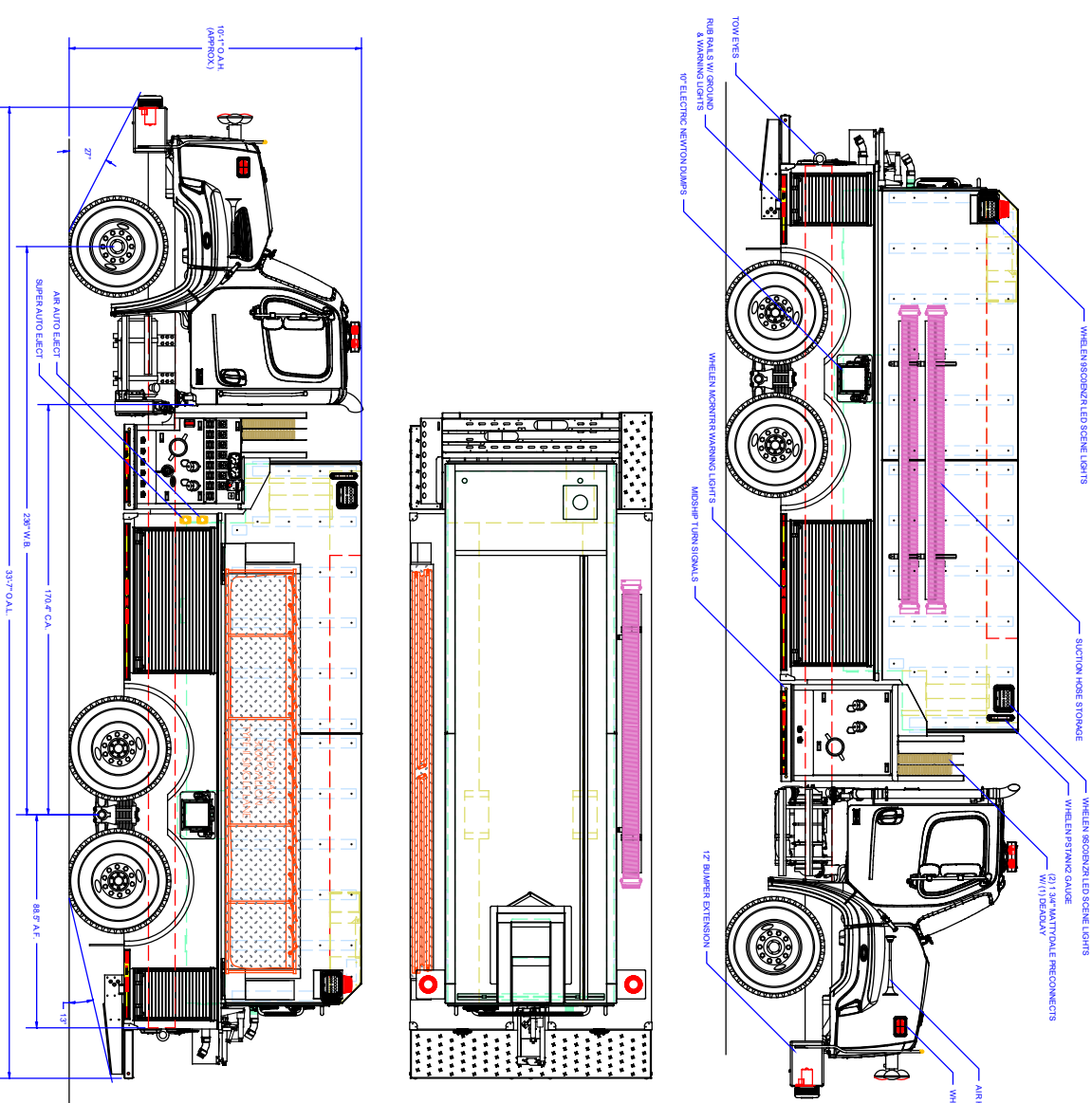
- Freightliner 114sd 2-Door Chassis
- Cummins 500 HP X12 Engine
- Allison 4500 EVS Automatic Transmission
- Heavy Duty Stainless Steel Body and Subframe
- Stainless Steel Intermediate Pump Module
- Waterous CXVPA 1000 GPM Single Stage PTO Pump
- Trident Air Prime System
- FRC Pump Boss Pressure Governor
- FRC Tankvision Water Tank Level Gauge with Three (3) Whelen Strip Lites
- Two (2) 6" Intakes, One (1) Each Side
- One (1) 2½" Gated Intake, Left Side
- Two (2) 2½" Discharges, Left Side and Two (2) 2½" Discharges, Right Side
- One (1) 2½" Discharge Rear Right Side
- Two (2) 1½" Preconnects with Deadlay Hose Bed
- ROM Roll-Up Doors
- Zico Hydraulic Folding Tank Bracket, Left Side
- Suction Hose Storage Right Side
- 3000 Gallon Poly Wetside Tank with Wetside Hose Bed & Front Fill Tower
- Two (2) 2½" FirePrograms Tank Fills, Rear One (1) Each Side
- Three (3) 10" Newton Stainless Steel Electric Dumps, One (1) Each Side Between the Axles and One (1) Rear with Electric Extensions and Cab Controls
- 12 Volt Electrical System with NFPA Compliant Warning Light Package
- Progressive Dynamics Battery Charger, L1 Compartment
- Kussmaul 20 Amp Super Auto-Eject 120V Shoreline Connection, Left Front Body Post
- Kussmaul Auto Air Eject Left Front Body Post
- Whelen LED Warning Light Package with Opticom
- Whelen 200W Siren and 100W Speaker
- Federal Q2B Recess Mounted Siren Center
- Six (6) Whelen Scene Lights, Two (2) Each Side, Two (2) Rear
- Two (2) 10' Lengths of 6" Suction Hose and One (1) 3000 Gallon Fol-Da-Tank
- 10'-1" Overall Height
- 33'-7" Overall Length
- 236" Wheelbase
- 170.4" Cab to Axle
- 18,000 FAWR
- 46,000 RAWR
- 64,000 GVWR



CUSTOMER APPROVAL SIGNATURE: \_\_\_\_\_ DATE: \_\_\_\_\_

**SOUTH FORK-0001**

IN THE EVENT THERE ARE DISCREPANCIES BETWEEN THE DRAWING AND THE SPECIFICATIONS, THE SPECIFICATIONS SHALL PREVAIL.



### COMPARTMENT DIMENSIONS

COMP #	DOOR OPENING SIZES
L1 & R1	58" WIDE X 27" HIGH X 29" DEEP
L2 & R2	19" WIDE X 27" HIGH X 29" DEEP

Pump Info:	Apparatus Type:
Control Location: Under Tank	Tanker
Pump Drive: Split Shaft	Chassis: Freightliner - 2 Door
Pump Make: VAHROUS	Tank Capacity: 3000
Pump GPM: 1000	Material: Stainless Steel

REV.	DESCRIPTION	DATE	BY
REC	REVISION HISTORY		
REC	DESCRIPTION	DATE	BY
REC	DESCRIPTION	DATE	BY

<p>UNLESS OTHERWISE SPECIFIED: 1/8" FINISHES ARE NOT TO BE TAKEN AS A LIVE FUNCTIONAL. 1/16" MESH. 1 1/8" R.</p>	<p><b>ALEXIS FIRE EQUIPMENT CO.</b> P.O. BOX 569, ALEXIS, ILLINOIS 62412</p>
<p>THIS EQUIPMENT IS SPECIFIC TO THE SOUTH FORK VOL. FIRE DEPT. BRANDYVINE, WV.</p>	<p><b>DRYSIDE TANKER</b> SOUTH FORK VOL. FIRE DEPT BRANDYVINE, WV</p>
<p>QUANTITY: 1</p>	<p>T-M08</p>
<p>DATE: 10/29/22</p>	<p>2556</p>
<p>CONTRACT #</p>	<p>SHEET 1 OF 2</p>

DRAWN: MI. TINKHAM

CHECKED: TINKHAM