

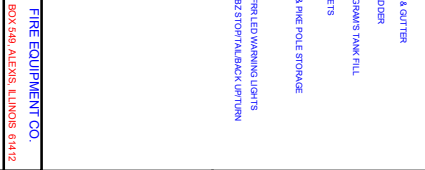
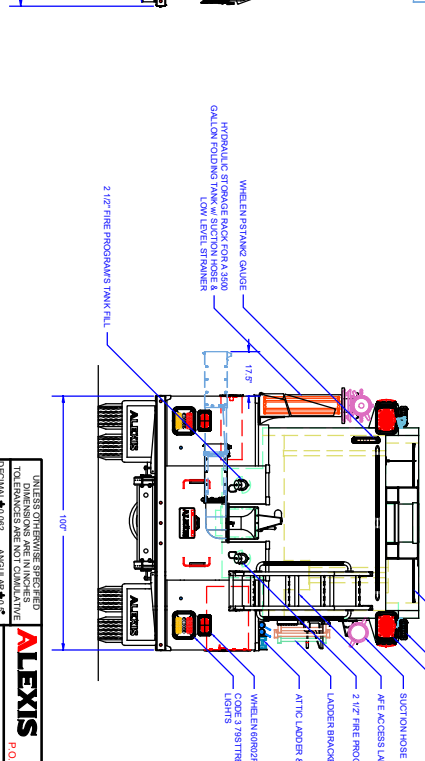
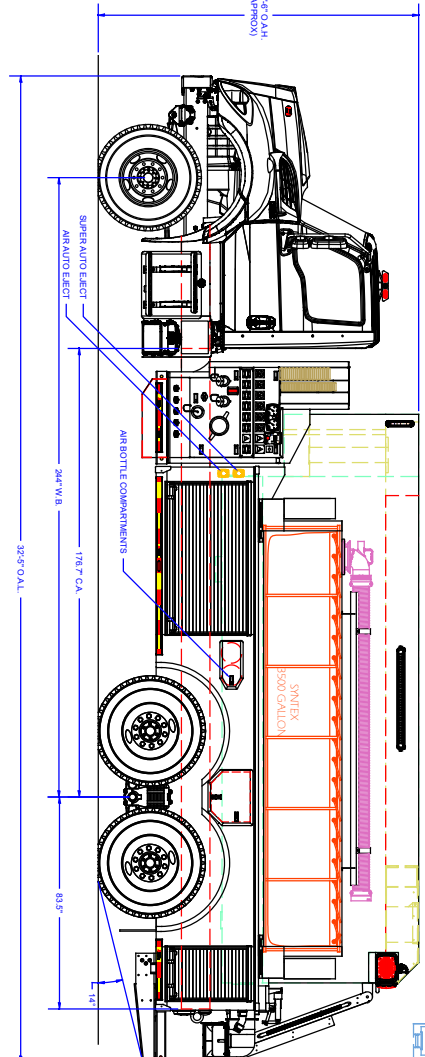
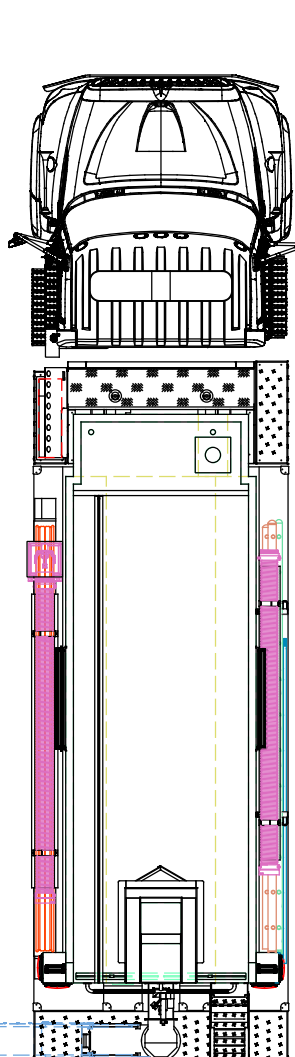
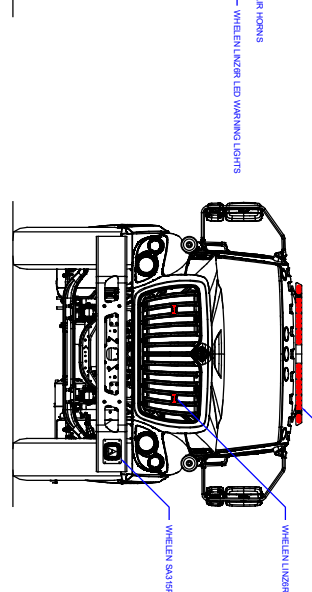
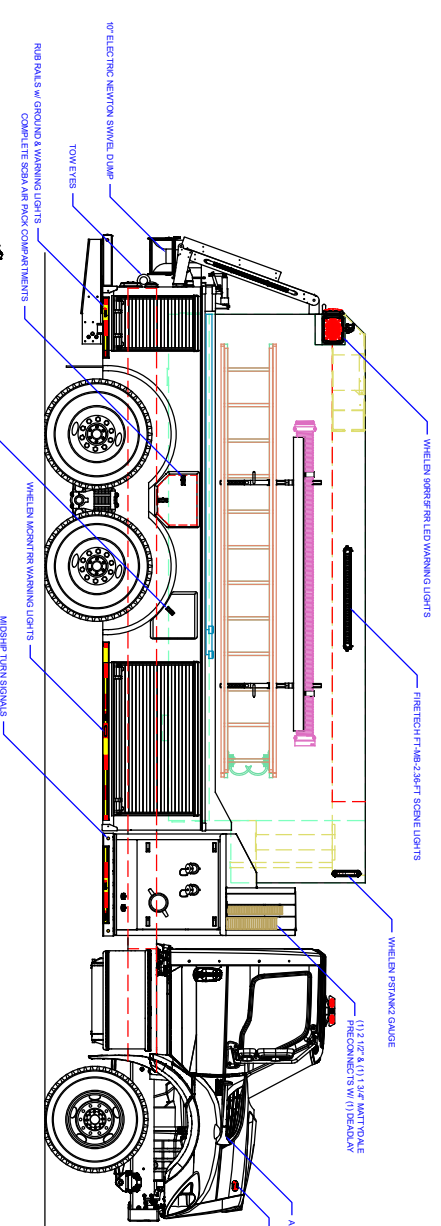
## 3500 GALLON TANKER #2526



### TECHNICAL SPECIFICATIONS

- International HV607 2-Door- Chassis
- Cummins 450 HP L9 Engine
- Allison 3000 EVS Automatic Transmission
- Heavy Duty Stainless Steel Body and Stainless Steel Subframe
- Stainless Steel Intermediate Pump Module
- One (1) Free Floating Hose Well, Left Side Running Board
- Waterous CXVPA 1250 GPM Single Stage PTO Pump
- Trident Air Prime System
- FRC Pump Boss Pressure Governor
- FRC Tankvision Water Tank Level Gauge with Three (3) Whelen Strip Lites
- Two (2) 6" Intakes, One (1) Each Side
- One (1) 2½" Gated Intake, Left Side
- Two (2) 2½" Discharges, Left Side and Two (2) 2½" Discharges, Right Side
- One (1) 1½" and One (1) 2½" Mattydale Preconnects with Deadlay Hose Bed
- One (1) Forward Dual Wheel Well Air Bottle Compartment, Left Side
- Two (2) Center Wheel Well SCBA Compartments, One (1) Each Side
- One (1) Forward Fire Extinguisher Compartment, Right Side
- ROM Roll-Up Doors
- AFE Stainless Steel Rear Access Ladder with Flip Down Step
- Zico Hydraulic Folding Tank Bracket, Left Side
- Extension and Roof Ladder Brackets, Right Side
- Suction Hose Storage, One (1) Each Side
- 3500 Gallon Poly Wetside Tank with Wetside Hose Bed & Front Fill Tower
- Two (2) 2½" FirePrograms Tank Fill, Rear One (1) Each Side
- One (1) 10" Newton Stainless Steel Electric Swivel Dump with 36" Manual Extension, Rear
- 12 Volt Electrical System with NFPA Compliant Warning Light Package
- Progressive Dynamics Battery Charger, L1 Compartment
- Kussmaul 20 Amp Super Auto-Eject 120V Shoreline Connection, Left Front Body Post
- Whelen LED Warning Light Package
- Whelen 200W Siren and 100W Speaker
- One (1) Firetech HiViz 40" LED Scene Light Bar, Each Side
- Two (2) Firetech HiViz 8" LED Scene Light Bars, One (1) Each Side Rear
- One (1) 10' Attic Ladder, One (1) 14' Roof Ladder with Hooks, One (1) 24' 2-Section Ladder, Two (2) 10' Lengths of 6" Suction Hose, One (1) 6" Low Level Strainer, One (1) 3500 Gallon Fol-Da-Tank, One (1) 6' Pike Pole, and One (1) 8' Pike Pole
- 10'-6" Overall Height
- 32'-5" Overall Length
- 244" Wheelbase
- 176.7" Cab to Axle
- 18,000 FAWR
- 46,000 RAWR
- 64,000 GVWR





REVISION HISTORY		DATE	BY	APPARATUS TYPE	UNDER TANK
01	SALES SUPPORT	8/7/22	AMJ	Pump Model	CX Series
02	SALES SUPPORT	8/7/22	AMJ	Pump Make	Pump GMH
03	SALES SUPPORT	8/7/22	AMJ	Pump Model	Pump GMH

COMPARTMENT DIMENSIONS	
DOOR OPENING SIZES	COMP #
58" WIDE X 27" HIGH X 28" DEEP	L13 R1
78" WIDE X 27" HIGH X 28" DEEP	L23 R2

UNIVERSITY OF WISCONSIN EXTENSION  
**ALEXIS** FIRE EQUIPMENT CO.  
 P.O. BOX 549, ALEXIS, ILLINOIS 61412

DECIMAL ANGULAR ± 1/16" ± 0.015"  
 FRACTIONAL ± 1/16" ± 0.015"

The copyright of this drawing and design and the right of reproduction here, is held by Alexis Fire Equipment Co.

DESIGNER: J. HENNING  
 DRAWN: J. HENNING  
 CHECKED: J. HENNING

SIZE:  $1/2" = 1'$   
 D 1/2" = 1'

PROJECT: TANKER  
 PART: RANSOM ILL  
 SHEET: 1 OF 2

8      7      6      5      4      3      2      1

A      B      C      D