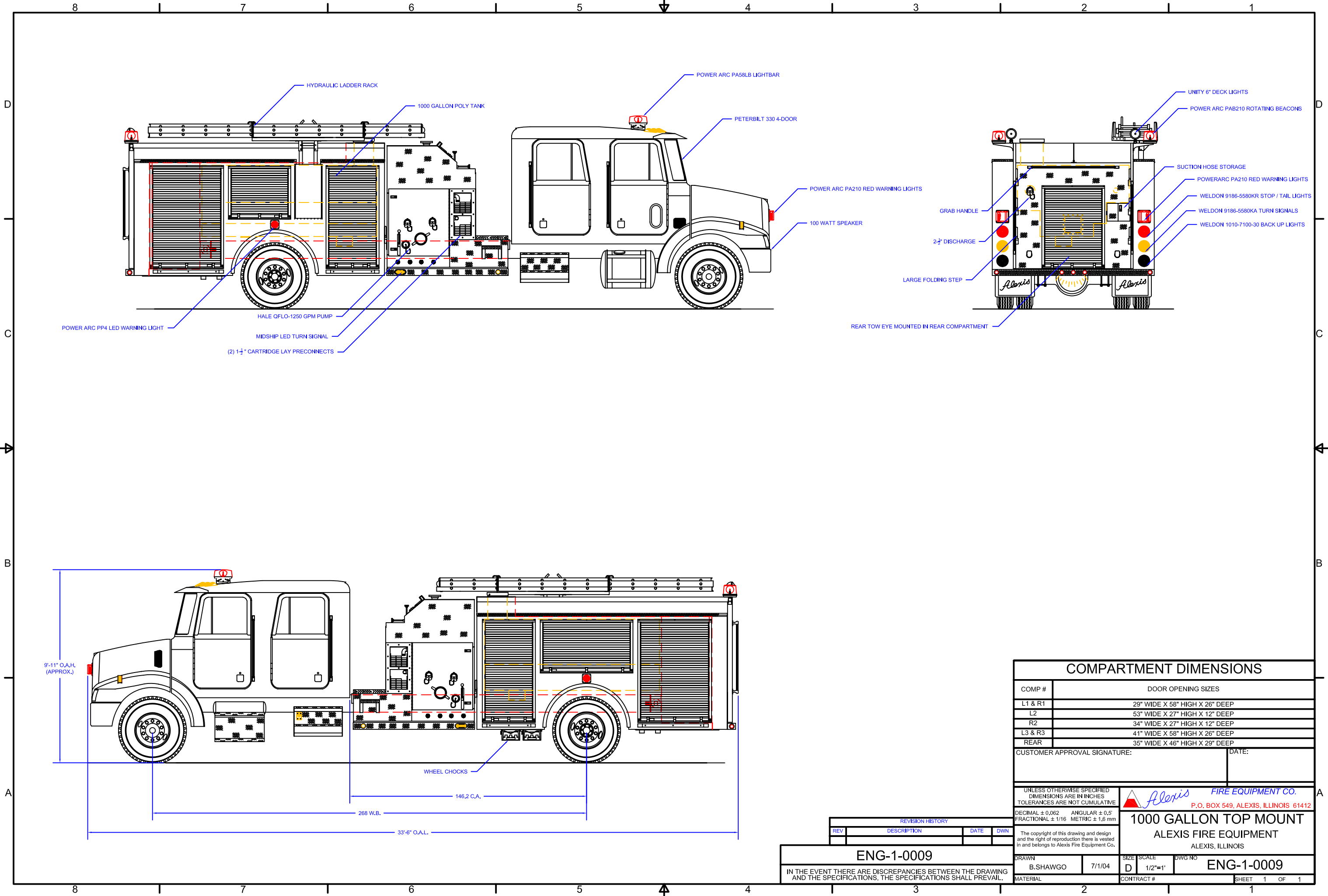
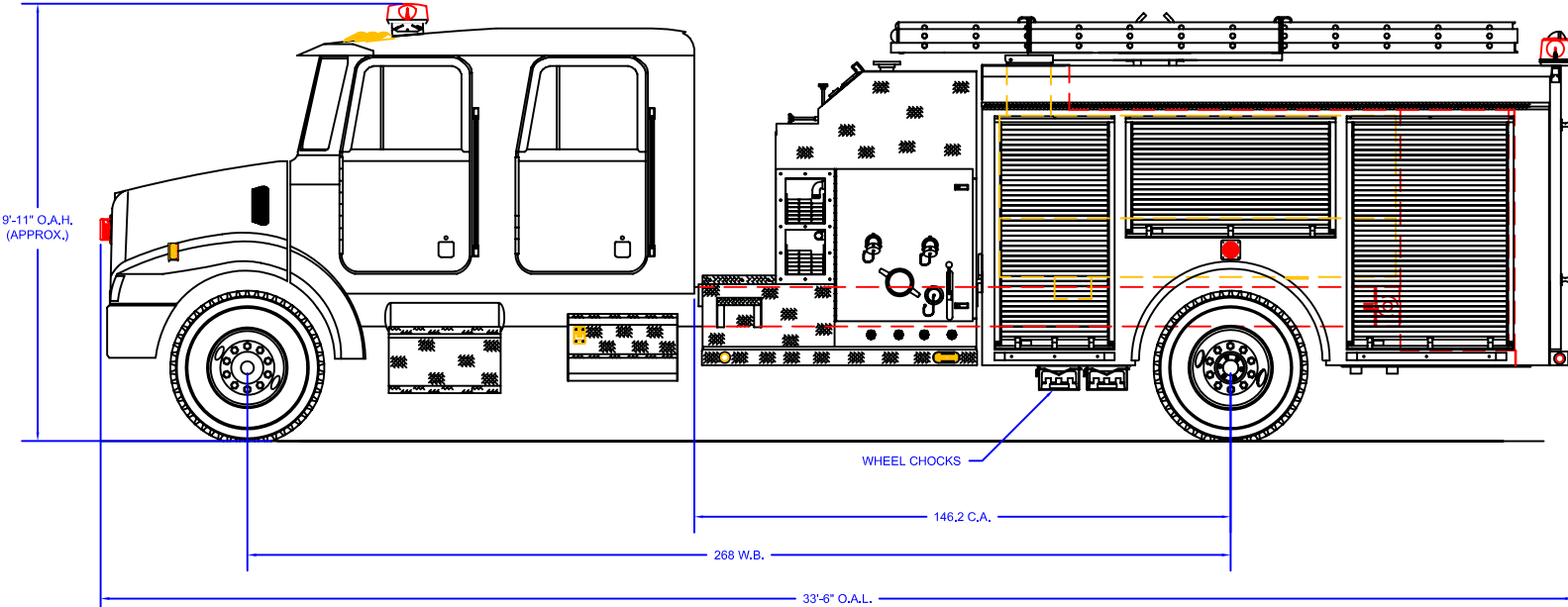


Y:\Trucks\Proposal Units\BASE BODY\ENG-1-0009.dwg, 9/24/2004 1:14:45 PM, bradley



- HYDRAULIC LADDER RACK
- 1000 GALLON POLY TANK
- POWER ARC PA58LB LIGHTBAR
- PETERBILT 330 4-DOOR
- POWER ARC PA210 RED WARNING LIGHTS
- 100 WATT SPEAKER
- UNITY 6" DECK LIGHTS
- POWER ARC PAB210 ROTATING BEACONS
- SUCTION HOSE STORAGE
- POWERARC PA210 RED WARNING LIGHTS
- WELDON 9186-5580KR STOP / TAIL LIGHTS
- WELDON 9186-5580KA TURN SIGNALS
- WELDON 1010-7100-30 BACK UP LIGHTS
- GRAB HANDLE
- 2-1/2" DISCHARGE
- LARGE FOLDING STEP
- REAR TOW EYE MOUNTED IN REAR COMPARTMENT
- POWER ARC PP4 LED WARNING LIGHT
- HALE QFLO-1250 GPM PUMP
- MIDSHIP LED TURN SIGNAL
- (2) 1-1/2" CARTRIDGE LAY PRECONNECTS



COMPARTMENT DIMENSIONS	
COMP #	DOOR OPENING SIZES
L1 & R1	29" WIDE X 58" HIGH X 26" DEEP
L2	53" WIDE X 27" HIGH X 12" DEEP
R2	34" WIDE X 27" HIGH X 12" DEEP
L3 & R3	41" WIDE X 58" HIGH X 26" DEEP
REAR	35" WIDE X 46" HIGH X 29" DEEP

CUSTOMER APPROVAL SIGNATURE: \_\_\_\_\_ DATE: \_\_\_\_\_

UNLESS OTHERWISE SPECIFIED DIMENSIONS ARE IN INCHES TOLERANCES ARE NOT CUMULATIVE

DECIMAL ± 0,062 ANGULAR ± 0,5° FRACTIONAL ± 1/16 METRIC ± 1,6 mm

**1000 GALLON TOP MOUNT**  
ALEXIS FIRE EQUIPMENT  
ALEXIS, ILLINOIS

DRAWN: B. SHAWGO 7/1/04 SIZE: SCALE: D 1/2"=1' DWG NO: ENG-1-0009

MATERIAL: \_\_\_\_\_ CONTRACT #: \_\_\_\_\_ SHEET 1 OF 1

REVISION HISTORY			
REV	DESCRIPTION	DATE	DWN
<b>ENG-1-0009</b>			
IN THE EVENT THERE ARE DISCREPANCIES BETWEEN THE DRAWING AND THE SPECIFICATIONS, THE SPECIFICATIONS SHALL PREVAIL.			

**Alexis FIRE EQUIPMENT CO.**  
P.O. BOX 549, ALEXIS, ILLINOIS 61412